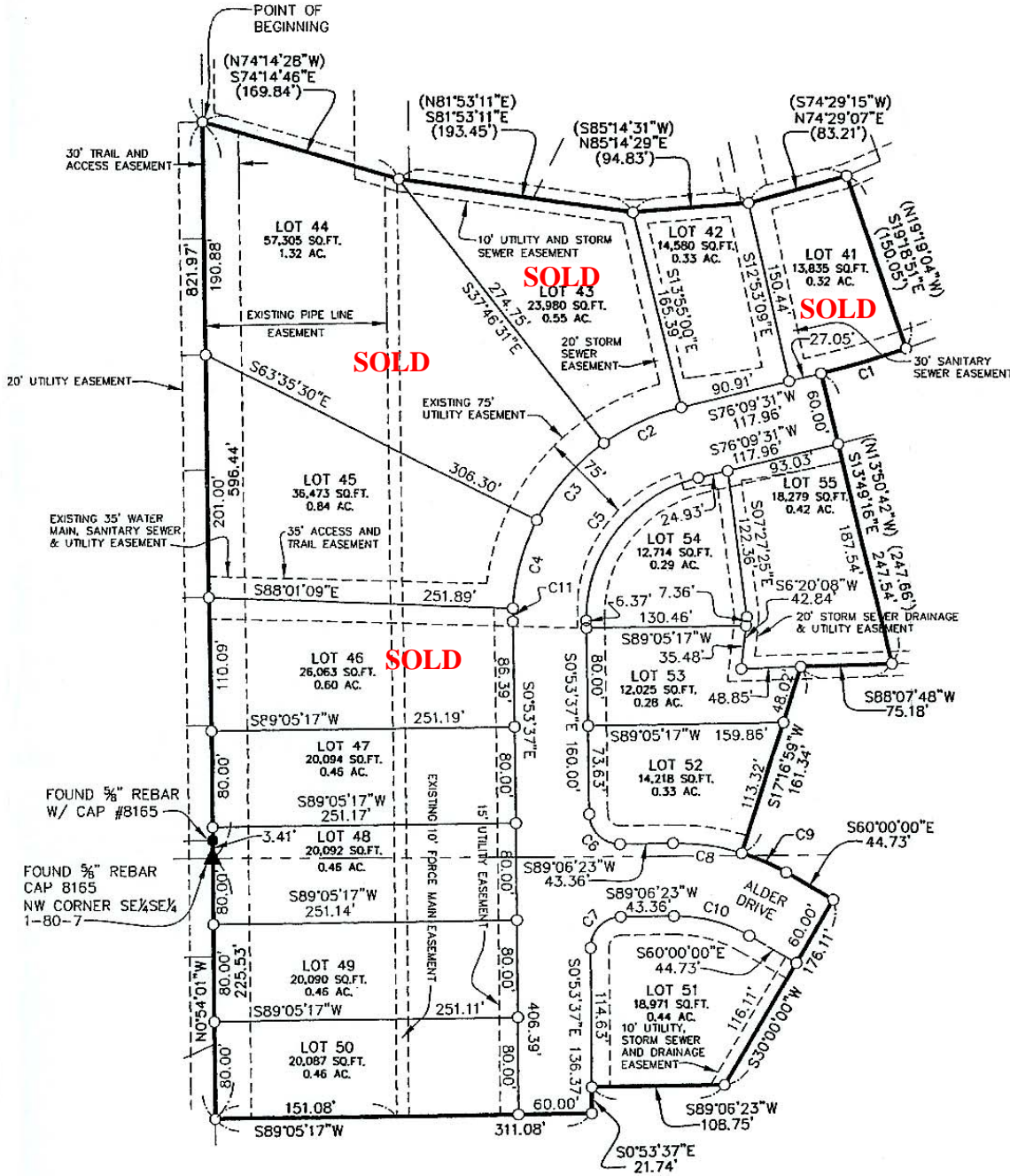


Cedar Springs

Phase Two

09/08/2009



CURVE TABLE						
CURVE	DELTA	TANGENT	LENGTH	RADIUS	CHORD	CHORD BRG
C1	(5°28'22")	(36.56')	(73.06')	(764.85')	(73.03')	S73°25'20"W (N73°25'07"E)
C2	22°15'22"	35.41'	69.92'	180.00'	69.48'	S65°01'50"W
C3	26°55'54"	43.10'	84.61'	180.00'	83.83'	S40°26'12"W
C4	24°21'53"	38.86'	76.54'	180.00'	75.97'	S14°47'18"W
C5	77°03'08"	95.54'	161.38'	120.00'	149.49'	S37°37'57"W
C6	90°00'00"	25.00'	39.27'	25.00'	35.36'	S45°53'37"E
C7	90°00'00"	25.00'	39.27'	25.00'	35.36'	S44°06'23"W
C8	18°10'36"	28.79'	57.10'	180.00'	56.86'	N81°48'19"W
C9	12°43'01"	20.06'	39.95'	180.00'	39.87'	N66°21'31"W
C10	30°53'37"	33.16'	64.70'	120.00'	63.92'	N75°26'48"W
C11	3°29'58"	5.50'	10.99'	180.00'	10.99'	S00°51'22"W